



New Entry-level 1.6M RTR UV printer

For multi-layer printing, adding business value



New AQ1602UVZ



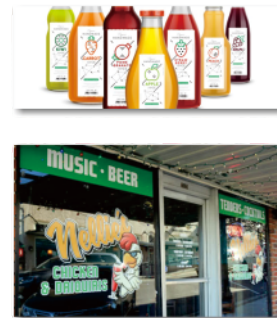
High cost performance & broadening applications



Multi-layer printing technique!

*Available with 3/4/5 layers printing.

Delivering amazing printings through UV innovation



Multi-layer printing



White Ink Recirculation



Water cooling platen

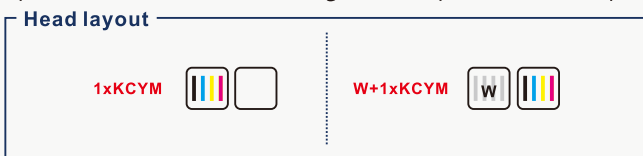


Anti-collision unit

T HUNDERJET AQ1602UVZ

ITEM	SPECIFICATION				
Model	ThunderJet AQ1602UVZ				
Print Head	1~2 Epson I3200 U1 print heads				
Technology	Drop-On-Demand Piezo with Variable Dot				
Curing Sytem	Dual water cooling LED UV lamps				
Ink	UV Flexible Ink				
Color Config.	1xKCMY; W+1x KCMY				
Ink Supply System	Bulk ink supply system + White Ink Recirculation System				
Ink Tank	1000ml				
Printing Width	Max.1600mm				
Media Type	Banner, Coated PP, Vinyl, Backlit textile, PVC film, PET film……				
Roll Diameter	Max. 300mm				
Roll Weight	Max. 50kgs				
Core Diameter	3 in (76.2mm) or 2 in (50.8mm)				
Printing Speed	Mode	Resolution	Color(1H)	CWC	CWKWC
	Draft	720x1200 dpi	10.5m ² /h	5.2m ² /h	1.6m ² /h
	Production	720x1200 dpi	8.5m ² /h	3.4m ² /h	
	High-res	720x1800 dpi	6m ² /h	3.1m ² /h	1m ² /h
	Photo	720x1800 dpi	5m ² /h	2m ² /h	
Data Interface	External: Ethernet; Internal: Fiber Optical				
Working Environment	Temp.23°C~29°C, Humidity:50%~80%				
Software	FlexiPRINT/ ONYX(Optional)……+GZ Printer Manager				
Power	Single phase, 50Hz/AC, 220V±10%, 5A(Printer+UV Controller)				
Installed Size	LxWxH(mm):2783X 767 X 1558				
G.W./ N.W.	290kgs/190kgs				

Specifications are liable to change without prior notice. The printing speeds are measured in 1.6m width printing.



Multi-layer Printing Application

Particularly designed for multi-layer applications: colorful; 2layers:W+C/C+W; 3layers:CWC; 4layers:CKWC-Day and Night; 5layers:CWKWC on demand with fine details.



Water Cooling Platen

Unique self-developed water cooling platen enables printing on a wide range of materials without wrinkle, including heat-sensitive ones.



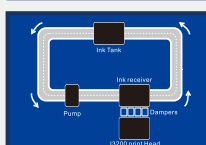
Intelligent Heating Unit

New-developed heating for ink supply system and print head to ensure smooth ink flow and stable printing performance.



Adjustable Stepping System

Serried pinch rollers, one-piece grit roller and Individual adjustable pinch roller assure accurate and wrinkle-free media stepping for different thicknesses of materials.



White Ink Recirculation System

The white ink is circulated at regular intervals during idle time to prevent pigment sedimentation that leads to malfunctions of the print head.

Gongzheng Group Co., Ltd.

Add: Miaobei Village, Yongjia County, Wenzhou City, Zhejiang Province, China 325102
Tel: +86-577-67319778
Fax: +86-577-67319775
Email: gzsales@gongzheng.com
Web: www.gongzheng.com

Scan to watch video



@GONGZHENG GROUP

Authorized distributor:

